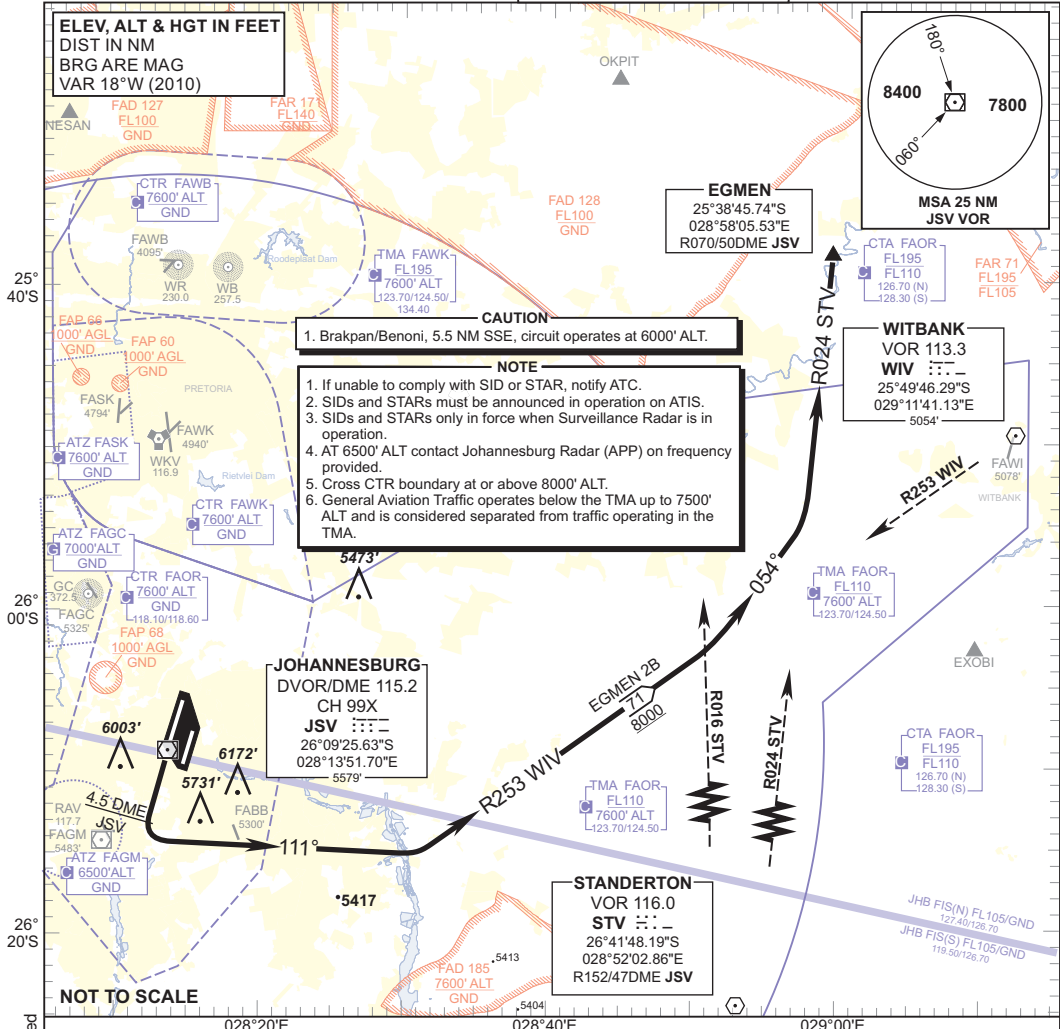


**STANDARD DEPARTURE
CHART -
INSTRUMENT
(SID)**

TRANSITION ALTITUDE
8000'
TRANSITION LEVEL
ATC

RADAR APP S 124.50 TWR E 118.60
E 124.50 W 118.10
W 123.70 ATIS 126.20
DIR 121.40 115.20
ACC N 126.70 SMC 121.90

JOHANNESBURG
(O.R. TAMBO INTERNATIONAL)
RWY 21R
EGMEN 2B



CAUTION
1. Brakpan/Benoni, 5.5 NM SSE, circuit operates at 6000' ALT.

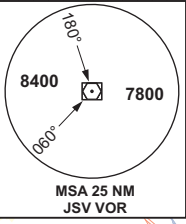
NOTE
1. If unable to comply with SID or STAR, notify ATC.
2. SIDs and STARs must be announced in operation on ATIS.
3. SIDs and STARs only in force when Surveillance Radar is in operation.
4. AT 6500' ALT contact Johannesburg Radar (APP) on frequency provided.
5. Cross CTR boundary at or above 8000' ALT.
6. General Aviation Traffic operates below the TMA up to 7500' ALT and is considered separated from traffic operating in the TMA.

JOHANNESBURG
DVOR/DME 115.2
CH 99X
JSV : : : :
26°09'25.63"S
028°13'51.70"E
5579'

STANDERTON
VOR 116.0
STV : : : :
26°41'48.19"S
028°52'02.86"E
R152/47DME JSV

WITBANK
VOR 113.3
WIV : : : :
25°49'46.29"S
029°11'41.13"E
5054'

EGMEN
25°38'45.74"S
028°58'05.53"E
R070/50DME JSV



NOT TO SCALE

Location Indicator FAOR /
CHANGE: NDB JB/JN & JA decommissioned

**EGMEN 2B:
RWY 21R** Climb to 8000' ALT, maintain RWY track to 4.5 DME JSV then turn left onto track 111°. Intercept R253 WIV (INBD). Crossing R016 STV turn left onto track 054° to intercept R024 STV (OUBD) direct to EGMEN.
Restricted to a minimum climb gradient of 4.3% to CTR boundary.
4.3% @ 140KT IAS = 610 FPM
4.3% @ 180KT IAS = 784 FPM
4.3% @ 220KT IAS = 958 FPM

COMMUNICATION FAILURE PROCEDURE (Squawk 7600)
Comply with EGMEN 2B SID, climbing to 8300' ALT or maintain last assigned level, whichever is the highest. At EGMEN set course as per flight plan and climb to flight plan level.
Aircraft wishing to return must continue to the SID termination point and climb to the last assigned level or MSA if cleared level is below MSA. At EGMEN proceed to OKPIT and comply with the OKPIT 4B RWY 21L STAR Communication Failure Procedure.